

Out & About 2016

in the Clwydian Range & Dee Valley AONB
and Denbighshire's Countryside



Bryniau Clwyd a Dyffryn Dyfrdwy
Clwydian Range and Dee Valley

Ardal o Harddwch Naturiol Eithriadol
Area of Outstanding Natural Beauty

Cyngor
sir ddinbych
denbighshire
County Council



Our 2016 programme offers a range of ways to enjoy the stunning landscape and heritage of the Clwydian Range and Dee Valley Area of Outstanding Natural Beauty and surrounding countryside.

Contact us

Denbighshire Countryside Service
Loggerheads Country Park, Denbighshire,
CH7 5LH

 01352 810586 / 614

 loggerheads.countrypark@denbighshire.gov.uk

denbighshirecountryside.org.uk
clwydianrangeanddeevalleyaonb.org.uk
ridenorthwales.co.uk

  **Check us out on social media**

- Denbighshire Countryside Service
- Clwydian Range & Dee Valley AONB
- Loggerheads Country Park
- Ride North Wales
- Little Terns

Symbols



Where you see this symbol **please book** to participate in our events during the 7 days running up to the event. This ensures we have enough staff available for the event. If you can't attend please let us know as we usually have a reserve list of people waiting to join us.



Event **charges** vary throughout the programme and parking charges also apply at some of our countryside sites.

Guided Walk Symbols – don't forget to dress for the weather and terrain and bring refreshments.



Easy Short walk on a hard surfaced route or accessible family activity



Average some steep sections and loose surfaces



Difficult long and strenuous, uneven, steep terrain

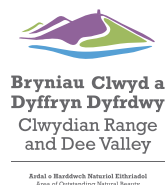
Dogs are not generally allowed on guided walks.

Grid Reference Help – www.gridref.org.uk

Put the grid reference into the search box, and you will be provided with a map.

We welcome feedback and comments.

Please forward your comments, ideas and suggestions to loggerheads.countrypark@denbighshire.gov.uk



Limestone Legacy

During the Lower Carboniferous (around 350 million years ago) much of the area now known as Wales was covered by a shallow tropical sea, teeming with life such as corals, molluscs, crinoids and echinoids.

These creatures died and settled on the lime-rich mud on the sea floor, and over millions of years thick accumulations built up to eventually form the special limestone areas we see today in Denbighshire, the spectacular Eglwyseg Escarpment, Bryn Alyn, Loggerheads, Graig Fawr, Moel Hiraddug, Eyarth Rocks – a landscape rich in geodiversity, biodiversity and industrial heritage.

Out & About has a number of events that will help you to discover our fantastic limestone heritage.



Little Terns at Gronant Dunes

Little Terns are one of our rarest breeding seabirds. We are fortunate that Gronant Dunes regularly attracts over 100 pairs of little terns each year.

A major five year partnership, funded by the EU LIFE+ Nature Recovery Programme and made up of 11 organisations, aims to secure the future of the little terns in the UK. By working together with local communities and beach users, we can ensure this little seabird will continue to visit our shores.

During the breeding season, Tern Wardens will be on site to provide information or find out more by visiting www.littleternproject.org.uk





Wednesday 09 March

10:00 - 12:00

Under the Aqueduct

Meet: Trefor Basin Car Park / SJ 272423
Join us for a spring walk along the banks of the Dee.



Wednesday 16 March

10:00 - 13:00

Moel Famau Circular

Meet: Bwlch Pen Barras Car Park
Join Wrexham Walks for a 6.5 mile circular walk around Moel Famau enjoying the magnificent views over the Clwydian Range. No dogs please.



Wednesday 23 March

10:00 - 16:00

Dee Valley Walk

Meet: Main Car Park Corwen
Walk the new Dee Valley Way. 13 mile walk. Transport will be provided back from Llangollen to the start of the walk, please book to ensure availability.




Saturday 26 March

11:00 - 13:00

Duck Race

Meet: Plas Newydd
Lots of fun down in the dell at Plas Newydd, can your duck be first past the post? Prizes for winners. Organised by Bryn Collen Primary School PTA.

 £1 per duck

Saturday 26 March

11:00 - 15:00

Easter Trail at Coed Moel Famau

Meet: Coed Moel Famau Car Park
An Easter trail around Coed Moel Famau with a chocolate treat at the end. £2 per child, all proceeds to the National Urdd Eisteddfod Appeal.



Saturday 26 March

11:00 - 14:00

Pontcysyllte Adventure Guided Walk

Meet: Pontcysyllte Visitor Centre
Come and explore Pontcysyllte World Heritage Site. Walks last approximately 1 hour. To book a place or for more information contact: 01978822912.



27 & 28 March

10:00 - 15:00

Easter Egg Hunt

Meet: Plas Newydd
Lots of Easter fun in the beautiful grounds at Plas Newydd, Llangollen. Find the Easter Eggs with the secret letters to claim your prize.

 £2.50

28 March - 3 April

All day

Loggerheads Easter Trail

Meet: Loggerheads Country Park
Lots of Easter fun and excitement at Loggerheads Country Park.

Tuesday 29 March

10:00 - 12:00

Eggcase Hunt

Meet: Lower Gronant Car Park
SJ 090836

Search for mermaids purses at Gronant Dunes - annual monitoring of sharks, skates and rays. In conjunction with NWWT.



30 April - 1 & 2 May

Llangollen Walking Festival

www.llangollenwalkingfestival.co.uk

07 & 08 April

10:00 - 15:00

Dry Stone Dyserth

Meet: Dyserth Waterfall Car Park
Two days walling in a scenic spot on side of Moel Hiraddug.



Wednesday 13 April

10:00 - 12:00

Chirk Castle guided walk

Meet: Chirk Castle Ticket office
Come and enjoy a walk with the warden at Chirk Castle.



Saturday 16 April

11:00 - 14:00

Pontcysyllte Guided Walk

Meet: Pontcysyllte Visitor Centre
Celebrate World Heritage Day and experience some Welsh World Heritage on our Family Friendly Pontcysyllte Guided Walk. Walks start at 11am and 2pm and will last approximately 1 hour. To book a place or for more information contact: 01978822912.





Sunday 17 April

14:00 - 16:00

Picnic at the Falls

Meet: Llantysilio Car Park SJ157425

Join us at the beautiful Horseshoe Falls and find out more about the area with our Horseshoe falls quest app.

Download the app before you come, search Horseshoe Quest.

Wednesday 20 April

09:30 - 12:30

Chirk Rail Walk

Meet: Wrexham General Station

Join Wrexham walks for a rail walk from Chirk to Oswestry. Meet at 9.25 to catch the 9.42 train to Chirk at Wrexham General station. Return by bus from Oswestry. Train / bus fare applies, no dogs please.



23 & 24 April

10:00 - 16:00

#MTBMeetup

Meet: Coed Llandegla

The original social MTB gathering returns to Oneplanet Adventure.

Whether you're a regular rider or new to mountain biking, there will be something for all the family. For further information:



@MTBMeetupUK



MTBMeetup

www.mtbmeetup.uk

Sunday 24 April

10:00 - 13:00

Willow Sculptures

Meet: Plas Newydd, Llangollen

Using the flora and fauna found in the beautiful dell as inspiration, come along and help weave willow into larger than life sculptures.



Thursday 28 April

08:00 - 10:00

Early Morning Exercise 1

Meet: Loggerheads Country Park

Get going early this Spring with a series of early morning walks that will last for around 1.5 hours. Dogs on leads welcome.



Monday 02 May

10:00 - 15:00

May Day Duck Race

Meet: Loggerheads County Park

Support local scouts on this fun family day.



Wednesday 04 May

10:00 - 15:00

Tern Fencing

Help us to prepare the summer home for the little tern. Ring 01745 356197 for further information.

Thursday 05 May

08:00 - 10:00

Early Morning Exercise 2

Meet: Loggerheads Country Park



Saturday 07 May

11:00 - 15:00

Orienteering and Badgemaking

Meet: Y Caban, Plas Newydd

Drop in to see how quick you can finish our family orienteering challenge.

Wednesday 11 May

20:00 - 22:00

Bwlch y Groes guided walk

Meet: Glyndyfrdwy layby, opposite the Butterfly Man / SJ157425

Enjoy an evening walk with spectacular views of the Dee Valley and Vale of Clwyd. Meet in the layby opposite the Butterfly Man in Glyndyfrdwy for a lift up.



Thursday 12 May

08:00 - 10:00

Early Morning Exercise 3

Meet: Loggerheads Country Park



15 - 17 May

Prestatyn Walking Festival

www.prestatynwalkingfestival.co.uk

Saturday 21 May

All Day

Excalibur Event

Meet: Moel Famau Country Park

Excalibur will test you to the limit. Run or walk the marathon, half marathon or 10k. www.conquerexcaliber.org.uk



Sunday 22 May

10:00 - 12:00

Woodcarvers

Meet: Plas Newydd, Llangollen

Come to the stunning grounds of Plas Newydd and watch woodcarvers create beautiful and intricate carvings and adults can have a go.

Sunday 22 May

14:00 - 16:00

Romans and Victorians linked by lead

Meet: Dyserth Falls Resort / SJ05618003

Explore a Roman bathhouse and Victorian Cornish engine house, all built to link in with lead extraction from the limestone of Prestatyn Hillside and beyond.



Friday 27 May

11:00 - 13:00

Meet the Gardener

Meet: Plas Newydd, Llangollen

Guided walking tour of gardens and dell at Plas Newydd with our gardener.

Sunday 29 May

10:00 - 13:00

Llangollen Circular

Meet: Llangollen TIC

Join the Wrexham Walkabout group for a 7 mile circular walk in the countryside around Llangollen, with great views of the Dee Valley.



Thursday 02 June

20:30 - 22:30

Nightjars on Nantyr

Meet: Llangollen Market Street Car Park
Join us for a leisurely walk around Nantyr Forest as we go in search of the enigmatic nightjar. Insect repellent recommended!



03 - 06 June

All day

Loggfest

Meet: Loggerheads

Family fun festival of great music, food & drink. For more information visit loggfest.co.uk.



Saturday 04 June

11:00 - 16:00

A Hundred Years Ago

Meet: Ruthin Gaol

In 1916 the Gaol closed, come and hear the stories of the wardens and prisoners of those last months. Included in the admission charge.



5th - 11th of June

Wrexham Walking Festival

www.walksinwrexham.com

Thursday 09 June

15:45 - 17:15

Afterschool Mini Adventures 1

Meet: Loggerheads Country Park
Explore and learn about the natural world with the Warden at Loggerheads Country Park with these four short sessions. Starting in the national biodiversity week, activities will include river dipping to discover the amazing wildlife living in the river, making bee homes to help these vital insects, collecting leaves and getting creative and investigating the secret world of moths!



Thursday 09 June

20:30 - 22:00

Nightlife at Moel Famau

Meet: Coed Moel
Famau Car Park /
SJ 174 613

A walk through the forest and out into the moorland at dusk - to see what animals we might find in the country park at night. We should see bats, owls and moths, and perhaps even the elusive nightjar.



11 - 17th July

Halkyn/Holywell Walking Festival

www.walkaboutflintshire.com

www.holywellwalkersarewelcome.org/walking-festival

Saturday 11 June

14:00 - 17:00

Llangollen Rotary Club Fete

Meet: Plas Newydd, Llangollen

One of Plas Newydd's busiest days, lots of fun for everyone, stalls galore, coconut shy, craft stalls, silver band and refreshments.

Wednesday 15 June

10:00 - 12:00

Eglwyseg guided walk

Meet: Llangollen Pavilion Car Park

Come and find out about the fantastic wildflowers that grow on the limestone escarpment. Meet in the Pavilion Car Park, Llangollen, for a lift up.



Thursday 16 June

15:45 - 17:00

Afterschool Mini Adventures 2

Meet: Loggerheads Country Park

See Thursday 9 June entry for details.



Friday 17 June

10:00 - 12:00

Seabird Watch

Meet: Lower Gronant Car Park / SJ 090836

A guided tour around the Little Tern colony. A chance to ask questions about the birds and why they travel 4000 miles to the edge of Prestatyn.



Saturday 18 June

11:00 - 13:00

Fairies and Elves

Meet: Y Caban, Plas Newydd

Enter the magical world of fairy folk and their little elf friends. Come and create fantastical little people from old fashioned pegs, leaves, twigs, felt... and whatever else we find.

£4

Thursday 23 June

15:45 - 17:00

Afterschool Mini Adventures 3

Meet: Loggerheads Country Park

See Thursday 9 June entry for details.



Sunday 26 June

16:30 - 19:00

Picnic in the Park

Meet: Plas Newydd

Listen to Llangollen Silver Band in the beautiful surroundings of Plas Newydd while picnicing to popular classics, don't forget to bring your brolly, just in case!) Games for the kids.

£



Sunday 26 June

18:30 - 20:30

Romeo and Juliet

Meet: Loggerheads Country Park

Another magical performance from the award winning Taking Flight Theatre .

Adult £14, Concessions £10, Children

£6, Family tickets £32. All bookings

www.chapter.org 02920 304400. Pre

theatre menu available at Caffi Florence,

to book a table call 01325810397.

£

Wednesday 29 June

10.00 start

Llangollen Circular

Meet: Llangollen TIC

Join the Wrexham Walkabout group for

a 7 mile circular walk in the countryside

around Llangollen, with great views of

the Dee Valley. No dogs please.



Thursday 30 June 2016

15:45 - 17:00

Afterschool Mini Adventures 4

Meet: Loggerheads Country Park

See Thursday 9 June entry for details.



Friday 01 July

14:00 - 16:00

Seabird Watch 2

Meet: Lower Gronant Car Park

See Friday 17 June entry for details.



Wednesday 13 July

10:00 - 12:00

Minera Mountain guided walk

Meet: Minera Leadmines Country Park /

SJ 276510

Explore the Lead Mines Country Park

and surrounding countryside.



Wednesday 13 July

10:00 - 15:00

Board Walk Repairs 1

Meet: Presthaven Holiday Camp entrance

Come and help re build a section of

Boardwalk set in an area of the sand

dunes leading to the Little Tern Colony



Thursday 14 July

10:00 - 12:00

Learn about Loggerheads 1

Meet: Loggerheads Country Park

Do you love Loggerheads but would

love to know more? Why is it so special?

Why does the river disappear? How did

Loggerheads get it name? What

secretive wildlife lives here? Find out with

a guided walk and talk.



Thursday 14 July

10:00 - 15:00

Board Walk Repairs 2

Meet: Presthaven Holiday

Camp entrance

Friday 15 July

10:00 - 12:00

Seabird Watch 3

Meet: Lower Gronant Car Park

See Friday 17 June entry for details.

Tuesday 19 July

14:00 - 16:00

Learn about Loggerheads 2

Meet: Loggerheads Country Park

If a guided walk doesn't suit you then

come and hear about the Park with a

powerpoint presentation and watch our

'Hidden Loggerheads' wildlife DVD.

Tuesday 19 July

18:00 - 20:00

Limestone Hillfort

Meet: car park off Thomas Avenue

Visit the Iron Age Hillfort of Moel

Hiraddug, excavated in the 20th century

prior to being partly quarried away.





SCHOOL SUMMER HOLIDAYS

ALL SUMMER HOLIDAYS

10:00 - 16:00

Crafts at Ruthin Gaol

Meet: Ruthin Gaol

Creative crafts and games even the grown-ups will enjoy.

Admission charges apply.



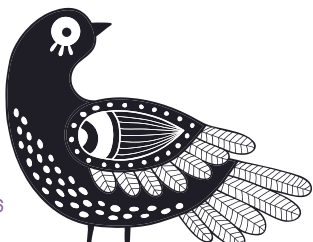
Thursday 21 July

18:00 - 20:00

Gop: What is it?

Meet: Trelawnyd / SJ09087982

Enjoy a short walk from Trelawnyd to the fascinating Gop Cairn, thought to have been built about 5000 years ago, but what is it?



Saturday 23 July

10:00 - 12:30

Visit the Excavations at Penycloddiau Hillfort

Meet: Llangwyfan Car Park / SJ13896663

Liverpool University are continuing their excavations at Penycloddiau hillfort, come and find out what has been discovered this year.



Saturday 23 July

11:00 - 13:00

Working Dogs at Moel Famau

Meet: Bwlch Pen Barras car park (top car park)

A walk up the Offa's Dyke Path National Trail to Jubilee Tower with the warden to see working dogs on the moorland. The dogs are working setters and pointers who will be carrying out a black grouse survey.



Sunday 24 July

11:00 - 16:00

Iron Age Excavations!

Meet: Park in the field opposite the hillfort / SJ09447123

Archaeologists from Oxford are again excavating at Moel y Gaer Bodfari, come along and see what has been found this year.



Monday 25 July

11:00 - 13:00

Giant Art

Meet: Y Caban, Plas Newydd

All you need to bring is old clothes and lot's of imagination to this super-sized, big fun painting party on the lawn.



Wednesday 27 July

10:00 - 12:00

River Dipping at Gro Isa

Meet: Corwen Sports Pavilion

Come along and find out what critters live underwater and what makes the Dee such a special river. Wellies recommended!

Wednesday 27 July

11:00 - 15:00

Elf & Fairy Wands

Meet: Loggerheads

Description: Join us on the Tea Gardens at Loggerheads to collect magical things from the park and create your very own wand.



GREAT VICTORIAN DINOSAUR HUNT

Thursday 28 July

11:00 - 12:30

Loggerheads

14:00 - 15:30

Plas Newydd

Friday 29 July

11:00 - 12:30

Rhuddlan Nature

Reserve

14:00 - 15:30

Glan Morfa

Join the Off Book Theatre on a journey to discover creatures from the dawn of time....maybe even the mighty Tyrannosaurus Rex himself! The quest will take the audience, to a mysterious lost valley, encountering various wild animals and dinosaurs along the way. Learning about the creatures they see, as well as having fun. The creatures which they see will all be puppets.....very realistic puppets. Suitable for Primary School age children.





Thursday 28 July
20:00 - 22:00

Archaeology and wildlife at dusk

Meet: Coed Llangwyfan car park
SJ 139 668

A walk up through Coed Llangwyfan to Penycloddiau hillfort with the warden and the county archaeologist to find out about the history of the hillfort and the current management of the area. After (hopefully) seeing an amazing sunset we'll head back through the forest and see some bats.



Wednesday 03 August
11:00 - 15:00

Elf and Fairy Wands

Meet: Plas Newydd

Description: Join us to collect magical things from the dell and create a wand.



Friday 05 August
19:30 - 21:30
Zorro Open Air Theatre

Meet: Plas Newydd

Follow the adventures of Zorro amongst the Yew trees and Bardic stones of Plas Newydd as Off the Ground Theatre company return for another fantastic performance. For prices and booking details see www.offtheground.co.uk



Saturday 06 August
10:00 - 12:30
Visit the Excavations at Penycloddiau Hillfort

Meet: Llangwyfan Car Park /
SJ13896663

Liverpool University are continuing their excavations at Penycloddiau hillfort, come and find out what has been discovered this year



Saturday 06 August
10:30 - 16:00
Coed Moel Famau Family Fun Day

Meet: Coed Moel Famau Car Park
This is a day of fun and activities. There will be stream dipping, childrens crafts, den building, guided walks, demos, information and much more... (£2 car parking fee).

Wednesday 10 August
11:00 - 15:00
Elf and Fairy Wings

Meet: Loggerheads



Thursday 11 August
14:00 - 16:00
Bilberry Walk

Meet: Opposite the Ponderosa,
Horseshoe Pass / SJ 192 481

Pick your own bilberries, then perhaps learn how to make bilberry pancakes



Thursday 11 August
20:30 - 22:15
Rhuddlan Bat Walk
Meet: Rhuddlan Nature Reserve
Come on a walk around Rhuddlan to see which bats we can find as the night draws in, taking in the castle and local nature reserve.



Thursday 11 August
21:00 - 23:00
Meteorites at Night

Meet: Leisure Centre Car Park Corwen
An evening of shooting stars on Caer Drewyn. The walk up takes around 30 minutes and has one steep section.



Tuesday 16 August
19:30 - 22:30
Liberty Hall guided walk

Meet: Corwen Car Park

Enjoy the sights and sounds of the moorland at night. Transport leaves at 7:30pm.

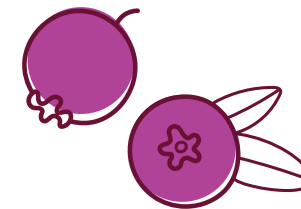


Wednesday 17 August
11:00 - 13:00
A day in the Dell

Meet: Y Caban, Plas Newydd
Come and find out what's living in the stream (wellies will help!) and try your hand at building a den.

Wednesday 17 August 2016
11:00 - 15:00
Elf and Fairy Wings

Meet: Loggerheads



Friday 19 August
10:00 - 12:00
Bilberries, bilberries, bilberries!

Meet: Coed Llangwyfan SJ 174 613
Bring the kids and a container and come for a walk with the warden through the forest onto the moorland to pick these delicious little berries. Then take them home and eat them as they are or make muffins, pancakes, jam or any other recipes you can find.



Tuesday 23 August

20:00 - 21:30

Bat Walk

Meet: Main Car Park, Corwen

Come on a walk around Gro Isa to see which bats we can find as the night draws in.



Wednesday 24 August

11:00 - 15:00

Elf & Fairy Leaf Crowns

Meet: Loggerheads



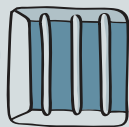
Thursday 25 August

11:00 - 16:00

Stories of the Gaol

Meet: Ruthin Gaol

Get in line! Hear the tales of the wardens and learn the punishments you faced as a prisoner. Included in admission charge.



Wednesday 31 August

11:00 - 15:00

Elf & Fairy Leaf Crowns

Meet: Plas Newydd



Thursday 01 September

19:45 - 21:30

Bats in the Forest

Meet: Coed Nercwys Northern Car Park

Come along to Nercwys Forest for a short walk and a chance to see and hear bats. Insect repellent advised.



3 - 4 September

Corwen Walking Festival

www.corwenwalkingfestival.co.uk

Saturday 03 September

09:00 - 11:00

Moth Morning!

Meet: Loggerheads Country Park

Help us investigate the world of moths over a cup of coffee by identifying and recording moths from the moth trap. We will also be checking footage from our wildlife camera.

Saturday 10 September

20:00 - 22:00

Exposure Lights Big Night Out

Meet: Coed Llandegla

Create your own two-wheeled adventure with a 20km or 40km night ride through the Clwydian Range ahead of the Scott MTB Marathon. For booking and more info contact www.mtb-marathon.co.uk.



Sunday 11 September

10:00 - 13:00

Scott MTB Marathon Series round 5

Meet: Ruthin Rugby Club

The traditional finale of the MTB Marathon. With three routes available (75km, 50km and 25km) and a mini marathon for under 16s, this event is one not to be missed! For booking and more info contact www.mtb-marathon.co.uk.



Wednesday 14 September

10:00 - 12:00

Trefor Rocks guided walk

Meet: Llangollen Pavilion Car Park

Enjoy this gentle mountainside stroll exploring the remnants of the limestone industry. Meet in Llangollen for a lift up.



17 & 18 September

11:00 - 17:00

British Downhill Series

Meet: One Giant Leap Llangollen, Tan y Graig Farm, Llangollen, LL20 8AR

Taking part is not for the faint hearted, but spectating is great fun! For more information, or to marshal at this event visit www.britishdownhillseries.co.uk



Sunday 18 September

All Day

DOG SHOW

Meet: Loggerheads Country Park

An informal dog show at Loggerheads with a number of classes to enjoy. Enter on the day. Please ring Loggerheads for more information on 01352 810614.



Tuesday 20th September

10:00 - 13:00

Walks with the AONB Officer - Limestone rocks, ancient lookouts and the coast

Meet: Trelawnyd car park / GR 091795
A walk exploring the Northern extremities of the AONB landscape taking in Gop Cairn, Prestatyn Hillside and Graig Fawr.



Thursday 22nd September

10:00 - 13:00

Walks with the AONB Officer - Rivers, canals and aqueducts

Meet: Ty Mawr Country Park, Wrexham
A walk exploring to the Trevor Basin, Pontcysyllte Aqueduct and Landscape of the World Heritage Site and AONB



Sunday 25th September

10:00 - 16:00

Walks with the AONB Officer - Brooding Moors

Meet: Glyndyfrdwy layby / GR 158423
A walk exploring the industrial past of the Dee Valley. The walk will also reach the highest point in the AONB at Moel Fferna at 630 metres.



Thursday 29 September

18:30 - 20:30

Bats and Moths Evening

Meet: Y Caban, Plas Newydd
Come and find out what comes out after dark. We'll have a look at the moths in the trap then explore the grounds...bat detectors at the ready!

Wednesday 05 October

10:00 - 13:00

Minera Lead Mines

Meet: Minera Lead Mines Car Park
Join the Clwydian Range and Dee Valley AONB and Walkabout Wrexham for a walk including the industrial heritage area around Minera Lead Mines.



Wednesday 12 October

10:00 - 12:00

Llantysilio Tramway

Meet: Meet at the Britannia Inn for a lift up / GR 200 454
Come and enjoy the autumn colours and explore the industrial heritage.



24 - 31 October

Halloween Hunt

Meet: Loggerheads
Complete the spooky Halloween Hunt Trail to claim a prize.



£2.50

Saturday 29 October

17:00 - 19:30

Spook Night at Plas Newydd

Meet: Y Caban, Plas Newydd
Things that go bump in the dark.....come along and create spooky kooky pictures using LED's and long exposure photography, plus spooky stories in the old library in the house.



£4



Sunday 13 November

11:00 - 13:00

Autumn Walk and Crafts

Meet: Y Caban, Plas Newydd
Join us for some bird watching and an autumn forage in the colourful grounds at Plas Newydd, then get crafty with it.



£4

Wednesday 16 November

10:00 - 11:00

Limestone at Froncysyllte guided walk

Meet: Froncysyllte Community Centre / GR 370 414
Find out about the limestone origins of Froncysyllte and the surrounding countryside.



Thursday 08 December

10:00 - 15:00

Annual Volunteer Hedgelaying Competition

Meet: Venue to be confirmed
Hedge Laying is an important craft to regenerate hedgerows by encouraging new growth from ground level. Come along as part of a team.



Saturday 10

December

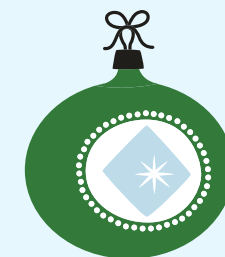
10:00 - 13:00

Christmas Crafts

Meet: Plas Newydd
Using Plas Newydd as inspiration, child and adults alike will design and make their own festive print block, to be printed onto card to take home . . . or join in on our wreath making workshop to decorate your doors.



£4



17,18,21,23 December

11:00 - 15:30

Father Christmas

Meet: Loggerheads Country Park
Come and meet Santa, enjoy a guided story walk and make a treat in Caffi Florence this December with Plas Derw Trust. £7.50 per child. Target Age 4-7 years. To book call 01352 840955, email anjelaforestschooll@gmail.com
Times: 11am, 12pm, 13:30, 14:30 & 15:30



£7.50



Get Walking, Feel the Difference Healthier, Fitter, Happier

Join one of these regular weekly walks to improve your health, increase your fitness and and recharge your wellbeing. Regular walking benefits managing weight control, keeps your heart healthy, reducing the risks of type 2 diabetes and certain cancers.



Monday

Chirk / 9:30 / call 01691 778666 for meeting point, 60 minute walk LL14 5NF

St Asaph / 10:30 / Bowling Green 90 minute walk LL17 0RQ

Gwaenysgor / 11:00 / Village Hall 2hr walk LL186LG

Prestatyn / 1:45 / Town Council Offices 40min LL19 9LR

Rossett / 2:00pm Burton Weir by the under-pass 60 min walk

Ruthin / Every 2nd Monday of the month Mindfulness Walk
6.30pm Llanfwrog Community Centre 60 min +

Tuesday

Corwen / 9:30 / Canolfan Ni 1hr LL21 0DP

Alyn Waters / 2:00 pm / Llay side car park 75-90 min

Dyserth / 11:00 / Community Centre 2hrs LL18 6LP

Wednesday

St Asaph / 10:30 / Bowling Green 90min LL17 0RG

Llangollen / 10:30 / Health Centre up to 60min LL20 8NU

Trelawnyd / 11.00 / Memorial Hall, 60min + LL16 6DN

Corwen / 1pm / Canolfan Ni 2hrs LL21 0DP

Thursday

Rhuddlan / 11:00 / Methodist Church, Gwyndy Street 120min LL18 5PU

Acton Park / 11:00 St Johns Church CP, Herbert Jennings Ave 50 min LL12 7YF

Llay / 11:00, Miners Welfare, up to 75min LL12 0TH

Friday

Rhyl / 12:30 Brickfield Pond 90min LL18 2YR

Regular walks are available from Llanasa and Prestatyn. Please call 01745 356197 for further details.



Become a Friend

The Friends are a new membership organisation that help people discover, enjoy and protect the outstanding landscape of the Clwydian Range and Dee Valley AONB. Here are some up and coming events to enable people to discover some hidden treasures...

Nany y Pandy's Past

Thursday 24th of March / 11am
Join the County Archaeologist, Fiona Gale, to visit what was a thriving slate working factory.

Behind the keyhole of Golden Grove Country House

Thursday 14th April / time TBC
A guided tour of Golden Grove Elizabethan Manor House and Grounds with the owners.

The enchanted gardens of Bryn Bella

Tuesday 21st June / 2pm
A visit to the gardens of Bryn Bella.

Behind the scenes at Chirk Castle

24th August / time TBC
Friends Members only event. Free entry for friends

Geological Gems

Friday 16th of September / 10:30am
Join Natural Resource Wales' Geologist, Raymond Roberts for a guided walk that will take you back 350 million years with a visit to Trevor Rocks.

For further details or to book on any of these events call 01244 535173, hello@friends.cymru



Cyfeillion
Brynau Clwyd a
Dyffryn Dyfrdwy

