

out & about 2014

in the Clwydian Range & Dee Valley AONB and
Denbighshire's Countryside

FREE



family fun, walking, cycling and much more

welcome

.....

Our 2014 programme offers a range of ways to enjoy the stunning landscape of the Clwydian Range & Dee Valley Area of Outstanding Natural Beauty and surrounding countryside.



Please book to participate in any of our family events with this symbol during the 7 days running up to the event. Please book for all walks as this helps us to ensure we have enough staff available for the event. If you can't attend please let us know as we usually have a reserve list of people waiting to join us.

We have been granted funding for this year but cannot guarantee being able to produce a paper copy of the Out & About every year, however we will publish all the events on our websites and eventsnorthwales.co.uk as usual. If you would like to receive links please register your email address by clicking on the envelope symbol on our homepage www.denbighshirecountryside.org.uk and we will add you to the Denbighshire Countryside Service database (this is not shared with any third parties).

Keep reading to the end for our list of weekly and monthly walks.

We hope you enjoy getting Out & About in our outstanding countryside.



Cronfa Amaethyddol Ewrop ar gyfer Datblygu
Gwledig: Ewrop yn Buddsoddi
mewn Ardaloedd Gwledig
The European Agricultural Fund for
Rural Development: Europe Investing in
Rural Areas



Llywodraeth Cymru
Welsh Government



contact us:

Denbighshire Countryside Service

Loggerheads Country Park, Near Mold, Denbighshire. CH7 5LH

Tel: 01352 810614 Email: loggerheads.countrypark@denbighshire.gov.uk

Denbighshire Countryside Service, Environment Directorate, Denbighshire County Council

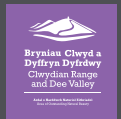
www.denbighshirecountryside.org.uk

www.clwydianrangeanddeevalleyaonb.org.uk

www.visitclwydianrange.co.uk



Denbighshire Countryside Service
Clwydian Range & Dee Valley AONB



Things to help you pick the right activity or event:

5+

8+

Minimum age



Accessible facilities nearby



Charge for this event



Drop in – you can join this event at any time within the activity duration



Please book

Please remember that all children must be supervised by an adult at all times and that we take photos for use in our own publicity, if you have any objections please let one of the leaders know before the start of the event.

To help you to locate the start of the walk please use www.gridref.org.uk – put the grid reference into the search box, and you will be provided with a map.

Guided walk symbols

Don't forget to dress for the weather and terrain and bring refreshments.



Short walk on a hard surfaced route or accessible family activity



Easy (short & flat, some loose surfaces)



Average (some steep sections and loose surfaces)



Difficult (long & strenuous, uneven, steep terrain)

DOGS are NOT generally allowed on guided walks. Please ring 01352 810614.

To book or for more information **call** 01352 810586 or 01352 810614
email loggerheads.countrypark@denbighshire.gov.uk

Look out for these coloured boxes:

Festival of British Archaeology events 'Hillforts Galore!'

Denbighshire Heritage Service events www.denbighshire.gov.uk/visitor
Every Friday during the summer holidays is play day at Nantclwyd y Dre.

Wales Biodiversity Week 7 - 15 June

A week of events to raise awareness about the wonderful wildlife of Wales. For more information see www.biodiversitywales.org.uk.



Community Miles Challenge - a guided walk each month.

Community Miles is a series of walks focussing on rural communities, pubs, shops, interesting features and magnificent views. The circular routes vary between 2 and 6.5 miles. Routes can be downloaded from www.denbighshirecountryside.org.uk/community-miles/

TRIBAN Cycle Challenge

Cycle the hills Hiraethog, Moel Famau and Llantysilio over three days, on and off road, 150k cross country on your mountain bike. The route takes you through some of the best landscapes in Denbighshire, guided by Coed Llandegla's very own One Planet Adventure. We can guarantee that it is an experience that you will never forget! These events are for experienced mountain bike riders.

Short Walks Collection

These 2-3 mile walks are aimed at those who would like a gentle stroll with others in south Denbighshire. We try to keep the routes as free of stiles and steep hills as possible, and always end near a café or pub for refreshments and a chat afterwards.

events

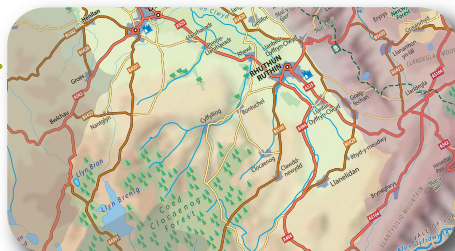
Thursday 6 - Friday 7 March

Sand Dune Restoration, Hortons

Nose, Rhyl. SH994808

10am – 3pm

Horton's Nose Dunes have undergone a vast restoration project since the building of the new bridge, more work needs to be carried out planting up Marram to secure the dunes and provided essential habitat, meet at Rhyl Harbour car park.



Wednesday 12 March

Beginners Map Reading

2 – 4.30pm

Loggerheads Country Park.



Saturday 8 March

Bird Box Making.

10.30am – 12.30pm

Make a bird or bat box to put up in your garden. Sports Pavilion, Green Lane, Corwen. SJ079437



Community Miles Challenge

Thursday 27 March

Llwybr Tyrnog 4 mile walk

10am – 12pm

Meet at The White Horse, Llandyrnog
SJ107653



Short Walks Collection

Wednesday 12 March

Llantysilio Green

10am – 12pm

Enjoy the early spring flowers on this walk around Llantysilio Church and the canal. Meet in Llantysilio Green car park SJ198433



Short Walks Collection

Wednesday 9 April

Caer Drewyn,

10am – 12pm

This is a gentle walk along the railway cutting and around the base of Caer Drewyn – or a climb up for the more adventurous. Meet in Corwen Leisure Centre car park LL21 9RW.



Saturday 12 April

Real Ale Trail

www.realaletrailflintshire.co.uk



Denbighshire Heritage Service

Saturday 12 April

Duck Race, Plas Newydd, Llangollen

11am – 1pm



14 – 28 Easter Holidays

Easter Trail @ Loggerheads

Country Park throughout the holidays,
pop into the shop.

Tuesday 15 April

Great Easter Eggcase Hunt

2 – 4pm

Explore the beach at Gronant Dunes looking for mermaid's purses (eggcases of sharks, skates and rays) and help contribute to the annual Shark Trust monitoring. Please bring wellies and something to collect the eggcases in. Meet at Lower Gronant car park (opposite the Crofters Pantry Café), SJ090836



TRIBAN Cycle Challenge

Friday 18 April

TRIBAN 1: Ruthin to Brenig

All day event – 9.30am start

Park at Llyn Brenig (SH968548) before being transported to Ruthin Craft Centre for the start of your ride. The journey will take you from Ruthin, through Clocaenog Forest before riding round Llyn Brenig and Alwen Reservoir. Around 50km (please note car parking charges apply, make sure that your bike is up to it and bring your own lunch).

Community Miles Challenge

Thursday 24 April

Denbigh Town

10am – 1pm

5 mile walk SJ046658



Thursday 1 May

Moorland Magic

6.30 – 8.30pm

Join us for an early evening saunter up to the bird hide in Coed Llandegla - we may even get to see displaying black grouse! Meet Coed Llandegla Visitor Centre SJ240523



Monday 5 May

Trinity Fammau Scouts Duck Race,

Loggerheads Country Park

10am – 3pm (final race)



Tuesday 13 May

Taith Tegid Part 1

12pm – 5pm

Come and explore the first section of the new promoted route from Cynwyd to Bala. This 7 ½ mile walk will climb into the Berwyn mountains and enjoy the stunning views from the Bronze Age stone circle. Meet in the car park in Llandrillo (SJ035372) at 12.00 for the 12:11 bus to Cynwyd (bring a bus pass if you have one!)



Short Walks Collection

Wednesday 14 May

Cynwyd Railway Line

10am – 12pm

Enjoy this flat riverside walk. Meet outside the post office in Cynwyd. LL21 0LA



14, 15 & 16 May

Dry Stone Walling

10am – 4pm

Come and learn the skill of dry stone walling. Full tuition provided from a qualified stone walling instructor. Meet at Corwen Leisure Centre car park LL21 9RW

TRIBAN Cycle Challenge

Friday 16 May

TRIBAN DAY 2: Brenig to Llandegla

All day event – 9.30 start

Park at Llandegla (SH227520) before being transported to Llyn Brenig to start your ride. Ride from Llyn Brenig through Clocaenog Forest, over Mwdwl Eithin before dropping down to Corwen and then along the bridleways of Llantysilio Mountain, before finishing off with the lower sections of Coed Llandegla's red route. Around 60km (please note car parking charges apply, make sure that your bike is up to it and bring your own lunch).

26 – 30 May Half Term

Monday 26 May

Giant Bluebells

10am – 1pm

Bring the family and get art and crafty at Loggerheads.



Tuesday 27 May

Holywell History Walk

1 – 3pm

Explore Greenfield Valley; woodland, reservoirs, ancient monuments and rich industrial past. Meet at The Mill on The Hill Café CH7 6DG.



Wednesday 28 May

Peg Creature Puppets

10am – 1pm

Create your own countryside creature with a surprising appetite! Loggerheads Country Park.



Community Miles Challenge

Thursday 29 May

Clywedog Clwyd

10am – 1pm

4 ½ mile walk around Llanynys and Rhewl. Meet at The Sugar Plum Tea Room. SJ113655



Friday 30 May

Queen's Baton Relay

Arrives 1.30pm

Jubilee Tower, Moel Famau – see website/ facebook for details.



Friday 30 May – Sunday 1 June

Rhyl Harbour Grand Opening – see website/facebook for details.

Denbighshire Heritage Service

Saturday 31 May

Captured, Ruthin Gaol

11am – 1pm and 2 – 4pm

Be a prisoner at Ruthin Gaol for the day...dress up in prison costume & have your mug shot taken & your own 'wanted' poster created! Fun for all the family.

Normal entry fee applies + £1



Thursday 5 June

Nightlife @ Nercwys

8.30 – 11pm

A 2 ½ mile evening stroll to discover (hopefully) nightjars, bats, owls and moths. Bring a torch. Insect repellent recommended! Coed Nercwys (Nr Mold) northern car park SJ218 593



Friday 6 – Sunday 8 June

Loggfest – see website/facebook for details.

Saturday 7 June

Rotary Club Fete, Plas Newydd, Llangollen

2 – 5pm



Monday 9 June

After School Bug Hunt

4 – 5pm

Join us after school for a gentle stroll around Loggerheads Country Park. Come and see what mini-beasts you can discover living in the park. Meet at Loggerheads Country Park.



5+



Wales Biodiversity Week

Tuesday 10 June

Night-time Safari at Coed Nantyr

8 – 10.30pm ish

Search for bats and nightjars. Insect repellent recommended. As this event is weather dependant, please ring on the day to confirm that it is still going ahead. Market Street car park (SJ214420), Llangollen, to catch a minibus.



Wales Biodiversity Week

Thursday 12 June

Nightlife @ Nercwys

8.30 – 11pm

A 2 ½ mile evening stroll searching for nightjars, bats, owls and moths. Bring a torch. Insect repellent recommended! Coed Nercwys (Nr Mold) northern car park SJ218 593



Wales Biodiversity Week

Saturday 14 June

Family Welly Fun Day

10am – 3pm

Plas Newydd, Llangollen



Short Walks Collection

Wednesday 11 June

Minera

10am – 12pm

A wildflower walk around the old leadmines. Meet in the Minera Country Park car park SJ272511



Sunday 15 June

Marsh Trax Family Fun Day

All day Rhyl

See our website or facebook for details SJ004801



Wales Biodiversity Week

Sunday 15 June

Pollinator Family Fun Day

10am – 3pm

Wepre Park, Connahs Quay

biodiversity@flintshire.gov.uk or

01352 703263



Community Miles Challenge

Thursday 26 June

Tremeirchion

10am – 12pm

A 3 mile walk enjoying the wide panoramas of the Vale of Clwyd. Meet at The Salusbury Arms, Tremeirchion SJ083732



TRIBAN Cycle Challenge

Friday 20 June

TRIBAN DAY 3: Llandegla to Ruthin

All day event – 9.30 start

Park at Ruthin Craft Centre (SJ125586)

before being transported to Coed Llandegla. Starting with either the red or black trail, which ever takes your fancy, before heading north, through Coed Nercwys and Coed Moel Famau, before cycling around Moel Famau Country Park and dropping down to Ruthin. About 75km (please make sure that your bike is up to it and bring your own lunch).

Friday 27 June onwards

Big Dee Day – the Invasion

There will be events throughout July across the River Dee catchment for invasive non-native species control. For details visit our website or email Lyn Byrne for a full programme (lynbyrne@wildlifetrustswales.org).

Denbighshire Heritage Service

Saturday 28 June

Llangollen Silver Band Picnic in the Park, Plas Newydd, Llangollen.

3pm onwards



Friday 4 July

Big Dee Day – The Invasion!

10am – 4pm

Help remove Himalayan balsam along the course of the River Dee.



Meet at the Sports Pavilion
car park, Green Lane,
Corwen SJ079437

Monday 7 July

Introduction to Nordic Walking, Loggerheads Country Park

10am – 12pm



Short Walks Collection/Community Miles Challenge

Wednesday 9 July

The Old Railway Line, Trefor

10am – 12pm

A 2 mile walk along the railway line,
quiet lanes and canal. Meet in the car
park at Trefor Basin SJ272423



Friday 11 July

Big Dee Day – The Invasion!

10am – 4pm

More balsam. More bashing! On the
banks of the river at Gro Isa, Corwen.
Meet at the Sports Pavilion car park,
Green Lane, Corwen SJ079437

Festival of British Archaeology

Saturday 12 & Sunday 13 July

Medieval Mayhem

All day

Travel back to the medieval times at
Loggerheads Country Park.



Sunday 13 July

As You Like It

Shakespeare's tale of sibling rivalry,
love, lust and mistaken identity brought
to you by the innovative and exciting
Taking Flight Theatre Company. An
evening promenade performance with
live music supported with BSL/SSE.
Bring a chair or picnic blanket.
Loggerheads Country Park.
www.takingflighttheatre.co.uk



Festival of British Archaeology

Wednesday 16th July

Moel y Gaer Walk

2 – 5pm

Meet at the small lay by at Plas Norway
SJ17014792, Llantysilio.



21 July – 1 September Summer Holidays

Saturday 19 July

Balsam Bash and Buffet, Caergwile

3 – 6.30pm

biodiversity@flintshire.gov.uk,
01352 703263

8+



Denbighshire Heritage Service

Sunday 20 July

Nantclwyd y Dre, Ruthin,
The National Garden Scheme
open day. SJ123582



for the house

Tuesday 22 July

Family River Dipping

10.30am – 12.30pm

Nets provided – but bring your
wellies. Meet at the Sports Pavilion,
Green Lane, Corwen. SJ079437



Wednesday 23 July

Elf and Fairy Wands

11am – 2pm

Join us on the Tea gardens at
Loggerheads to collect magical things
from the Park and create your very
own wand.



Festival of British Archaeology

Wednesday 23 July

Excavations at Moel y Gaer

2 – 5pm

Meet in the bus stop in Bodfari
SJ09687013 for a steep walk up to the
hillfort.



8+

Denbighshire Heritage Service

Wednesday 23 July

Romeo and Juliet,

Join us for the fabulous annual open air Shakespeare performance by The Lord Chamberlain's Men at Nantlwyd y Dre, Ruthin. Don't forget your picnic and chair!



Friends of Nantlwyd y Dre
on 01824 702607 or
plasgwyncottage@hotmail.com.

Community Miles Challenge

Thursday 24 July

Sun Bank, Llangollen

10am – 12pm

A 4 ½ mile walk along the Llangollen canal, with a short climb to enjoy brilliant views. Meet at Llangollen Pavilion car park, Abbey Road, Llangollen SJ210426



Festival of British Archaeology

Saturday 26 July

Excavations at Penycloddiau hillfort Llangwyfan SJ13906685

10am – 12pm

A chance to visit the excavations conducted by Liverpool University, learn about the latest findings from this enormous hillfort. Meet in the car park at Llangwyfan SJ13906685



8+

Festival of British Archaeology

Sunday 27 July

Excavations at Moel y Gaer Bodfari Offa's Dyke Path SJ 095708

11am – 4pm

Archaeologists from Oxford University are excavating at this important Iron Age Hillfort. Parking is very limited at the site or you can walk via the Offa's Dyke National trail from the centre of Bodfari, head north. They will be on site all day to show you around. Site is adjacent to the Offa's Dyke Path SJ095708



8+



Denbighshire Heritage Service

Sunday 27 July

Transported beyond the seas, Ruthin Gaol

11am – 4pm

Find out what it was like to be 'transported' to Australia. Hear about the lives of the convicts taken from Ruthin Gaol through their stories & music & look at the research that has helped us learn about them.



Monday 28 July

Walk to Commemorate the Outbreak of WWI

4 – 5.30pm

On July 28 1914 war was declared. Bodelwyddan played a large role in the subsequent war, training soldiers and seeing many momentous events. Bodelwyddan Castle SJ98567506



Tuesday 29, Wednesday 30 July & Friday 1 August

Charcoal Making

10am – 4pm

Try your hand at traditional charcoal making, free charcoal for all participants! Tuesday – fill the kiln, Wednesday lighting and burning, Friday – bagging the product. Gipsy Lane, Park at Trefor Community Centre LL20 7UD



Tuesday 29 July

Coed Llangwyfan Bat Walk

8.30 – 10.30pm

Join us for an evening stroll at Coed Llangwyfan searching for bats and owls. Coed Llangwyfan, top car park, on the road between Nannerch and Llandyrnog SJ139668



Wednesday 30 July

Dream catchers

11am – 2pm

Collect and use natural materials to add power to your own dream catcher. Loggerheads Country Park



Saturday 2 August

Coed Moel Famau Family Fun Day (SJ172612)

10.30am – 3.30pm



Wednesday 6 August

Elf and Fairy Crowns

11am – 2pm

Join us on the tea gardens at Loggerheads to collect magical things from the Park and create your very own crown.



Short Walks Collection

Wednesday 6 August

Ruabon Mountain

10am – 12pm

Come and enjoy the beautiful heather and stunning views. Meet at Prospects Tea Room LL20 TYL



Thursday 7 August

Marine Fun

10am – 12pm

Join us for wildlife games and activities on Rhyl beach. Meet on the beach opposite the RNLI Station, SJ009819

5+



Thursday 7 August

Discover the Denbigh Bats

8.30 – 10.30pm

A 3 mile walk around the walls, castle and ancient woodlands searching for bats and learning about the history of the town. Bat detectors provided but please bring your own if you have one and a torch. Meet Brookhouse Mill, Denbigh SJ071657



Friday 8 August

Bilberry Picking at the Ponderosa

2 – 4pm

Pick your own bilberries then we'll head to Pentredwr Community Centre to turn them into bilberry muffins (or wimberry cakes). Meet at the Ponderosa LL20 8DR



Saturday 9 August

Excavations at Penycloddiau Hillfort

10am – 12pm

Open morning to visit the excavations conducted by Liverpool University, learn about the latest findings from this enormous hillfort. Meet in the car park at Llangwyfan SJ13906685



8+

Denbighshire Heritage Service

Sunday 10 August

Open Air Theatre 'Jason and the Argonauts'

7.30pm

Drama in the grounds as Jason takes on the Argonauts amongst the yew trees and bardic stones of Plas Newydd, Llangollen.
www.offtheground.co.uk



Tuesday 12 August

Meteorites at Night

9 – 11pm

An evening of shooting stars on Caer Drewyn. The walk up takes around 30 minutes and has one steep section. Meet at the Leisure Centre Car Park Corwen LL21 9RW



Wednesday 13 August

Animal Magic

11am – 2pm

Animal masks and sparkly creatures on sticks; creatures living in Loggerheads Country Park.



Wednesday 13 August

Bilberry Hunt

10.30am – 1.30pm

Enjoy a stroll around Moel Famau finding the best bilberry spots whilst enjoying the superb views of the Clwydian Range. Bring a container to collect your berries in. Meet at Moel Famau, Bwlch Penbarras car park SJ162606



Wednesday 20 August

Elf and Fairy Wings

11am – 2pm

Join us on the Tea gardens at Loggerheads to collect magical things from the Park and create your very own wings.



Wednesday 20 August

Ruthin Bat Walk

8.30 – 10.30pm

Meet at Cae Ddol SJ120580.



Thursday 21 August

Denbigh & Flint Show



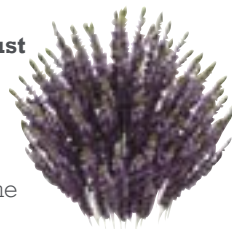
www.denbighandflintshow.com

Thursday 21 August

Heather Hike

10am – 4pm

A 10 mile walk around Ruabon Mountain. Meet at the parking area by the Hooson Monument (please car share if possible) SJ247427



Tuesday 26 August

Marine Fun

2 – 4pm

Join us for wildlife games and activities on Rhyl beach. Meet on the beach opposite the RNLI Station SJ009819



Wednesday 27 August

Hapa Zome

11am – 2pm

Have a go at this Japanese art of natural fabric printing – beating up flowers and leaves with hammers, pounding natural pigment into cloth! Loggerheads Country Park



Wednesday 27 August

Bat Bonanza

8 – 10pm

Enjoy a short presentation followed by a gentle one mile stroll using bat detectors. Bring a torch. Loggerheads Country Park.



Community Miles Challenge

Thursday 28 August

Graigfechan

10am – 1pm

A 6 mile walk from Graigfechan with great views of the Vale of Clwyd and beyond. Meet at the Three Pigeons Inn SJ147545



Corwen Walking Festival

Saturday 30 August

Brenig Way I

Llyn Brenig Visitor Centre to Bod

Petryal 16 miles

Meet at the Sports Pavilion, Green Lane, Corwen by 9.30am (walking festival registration will need to be done before setting off) SJ079437



Corwen Walking Festival

Sunday 31 August

Brenig Way II,

Bod Petryal to Corwen, 16 miles

Meet at the Sports Pavilion, Green Lane, Corwen by 9.30am (walking festival registration will need to be done before setting off) SJ079437



Sunday 31 August

The Last Link in the Chain

2 – 4pm

Explore the beginning of the Llangollen canal and World Heritage Site, look at the later railway and cross over the Dee using the recently reopened and refurbished Chain Bridge built by the entrepreneur, Exuperius Pickering. Meet in the Llantysilio Green car park at SJ19774328





Denbighshire Heritage Service

Sunday 31 August

Charity Dog Show and Fun Day

11am – 3pm

Let your family dog achieve fame and fortune, from 'dog most like its owner' to dog agility. Plas Newydd, Llangollen. £1 entry per class on the day.

Short Walks Collection

Wednesday 10 September

Chirk, 10am – 12pm

Explore the stunning canal and surrounding countryside. Meet at Glynwylfa Café, Castle Road, Chirk LL14 5BS



Thursday 11 September

Evening Bat Walk

6.30 – 8.30pm

Search for bats along the old railway line and canal. Meet in Trefor Basin car park SJ272423



Sunday 14 September

Ruthin Mountain Bike Marathon

The last and arguably one of the best legs of the MTB National Marathon returns to Ruthin. Take your pick from the full, middle, half and mini marathon distances.

www.mtb-marathon.co.uk



20 & 21 September

Mold Food Festival

www.moldfoodfestival.co.uk

Sunday 21 September

Open 2 Offas

Open 2 Offas is a long-established annual challenge walk with options of 30, 21 or 14 miles in 11½ hours from Cilcain Village Hall SJ176652

www.ldwa.org.uk/Merseystride



Community Miles Challenge

Thursday 25 September

Llangynhafal and Hendrerwydd

10am – 1pm

A 6.5 mile walk, which takes in the Vale of Clwyd, Moel Famau Country Park and Offa's Dyke Path National Trail. Meet at The Golden Lion, Llangynhafal SJ129635



Thursday 25 September

Taith Tegid Part 2

9.45am – 4pm

Explore this new promoted route from Cynwyd to Bala. Part 2 provides beautiful views of Bala Lake. Meet in the Llandrillo car park SJ035372, and explore the 11 ½ miles of rolling countryside on the way to Bala. We aim to catch the 15.51 bus from Bala High Street back (bring a bus pass if you have one!)



Saturday 4 October

Clawdd Newydd Circular

9.30am – 3.30pm

Join us on a long-distance walk using both the Brenig and Hiraethog Way to breathtaking views from Pincyn Lllys. Meet Clawdd Newydd Community Centre SJ081523



Short Walks Collection/Community Miles Challenge

Wednesday 15 October

Ceidiog Walk

10 - 12

A 2 ½ mile walk from Llandrillo with breath taking views of the Ceidiog valley. Meet in the car park in Llandrillo. SJ035372



27 – 31 October Half Term

Monday 27 October

Autumn Leaf Land Art

11am – 2pm

Get creative with autumn leaves at Loggerheads Country Park



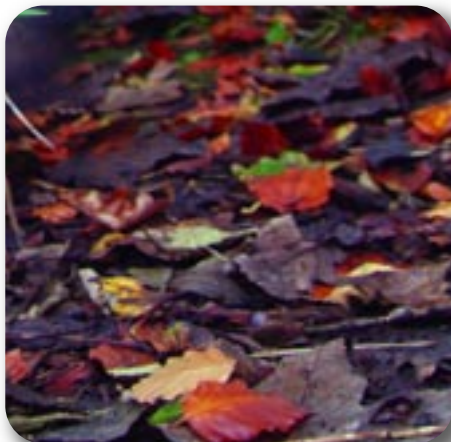
Wednesday 8 & Thursday

9 October

Hedge Laying at Brickfields Pond

10am – 3pm

Help lay the hedges to open up the views of this pond. Meet at Brickfields Car Park SJ014803



Tuesday 28 October

Spiders

10am – 1pm

Get crafty with sticks, willow and thread at Loggerheads Country Park.



Wednesday 29 October

Pumpkin Carving

2 & 3pm

Bring your own pumpkin and get creative. Loggerheads Country Park.



Thursday 30 October

Autumn Stroll

10am – 2pm

A 6 mile circular walk at Loggerheads Country Park.



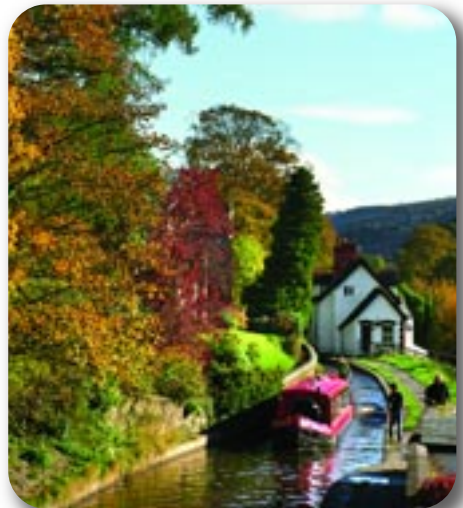
Denbighshire Heritage Service

Friday 31 October

Halloween at the Gaol!

11am – 4pm

Spooky crafts, stories and much much more! Ruthin Gaol admission charges apply.



Short Walks Collection

Wednesday 12 November

Llangollen Canal

10am – 12pm

The finale of the Short Walks Collection. Meet in the Pavilion car park, Abbey Road, Llangollen (by the harp).





Free activities for all...

Whether you are on a visit or live here we have an exciting new adventure for you.

Are you interested in Nature? Walking? Photography? Sketching? we have some ideas on our website to develop your skills or just to get you to discover some hidden gems in our beautiful county.

Download tomorrow's
adventure today...

For more information on each of the activities,
visit digitaldenbighshire.co.uk or digitaldenbighshire.mobi

Denbigh - Ruthin - Corwen - Llangollen



key I like...

Here are the categories:

- natural world
- getting creative
- fun with kids
- social history
- country walks
- urban strolls
- taking the dog
- accessible places
- visiting old buildings

Download tomorrow's
adventure today...



In **Denbigh** discover the landscapes which inspired Beatrix Potter to write Peter Rabbit, and sketch the wonderful old buildings in the town.



In **Ruthin** visit the Gaol and other buildings which shows Ruthin's history is steeped with the crime and punishment story and play hangman where the last person in Ruthin was hanged.



If you're in **Corwen** visit a true Welsh gem Rug Chapel - practise photography techniques and learn about its history. Discover the homelands of Owain Glyndwr, Wales' more famous hero.



In **Llangollen** take in Thomas Telford's canal, a feat of engineering, collect some leaves and make your own boat, take photos of the place George Borrow visited in 1862 when he did his grand tour.



Heritage Attractions

www.denbighshire.gov.uk/heritage

Nantclwyd y Dre

Walk back through seven ages of Wales' oldest timber-framed town house.

Plas Newydd

Home of the legendary 'Ladies of Llangollen' from 1798 to 1814. The Ladies eloped from Ireland and created a rural idyll by gothicising their home.



Bodelwyddan Castle

Set in 260 acres of parkland. Visit the historic house, family friendly museum and gallery and discover the WW1 trench remains in the deer park. Call 01745 584060.



Rhyl Museum

Experience the bustling life of a seaside resort as you stroll down the Edwardian 'pier'.

Ruthin Gaol

One of the most fascinating buildings in North Wales. A Pentonville-style cell block in use from 1654 to 1916.



events and information

.....



Come to our events by bus and reduce your carbon footprint!



Trouble free travel info 0871 200 22 33 www.travelinecymru.info

Stay a little longer and enjoy a visit to one of hundreds of fabulous places nearby.

More great events and information at www.eventsnorthwales.co.uk

Denbighshire Countryside Service 01352 810614/586

loggerheads.countrypark@denbighshire.gov.uk

www.denbighshirecountryside.org.uk

www.clwydianrangeanddeevalleyaonb.org.uk



Clwydian Range Centre at Loggerheads Country Park

An amazing place to pick up a fabulous gift for any occasion. Also the place to help plan your visit not only to Loggerheads, but Moel Famau, and further afield. Maps, books, gifts, tourist information and great hands-on activities for all. Open every day except Christmas Eve and Day. 01352 810586.

LIKE Loggerheads Country Park on Facebook

Caffi Florence at Loggerheads Country Park

Fresh, local, seasonal and homemade food and drinks. Great cookery courses and workshops. Open every day except Christmas Day. 01352 810538
info@caffiflorence.co.uk
www.caffiflorence.co.uk

Accommodation and things to do:

www.visitclwydianrange.co.uk

www.ridenorthwales.com

www.specialplacesindenbighshire.co.uk

Woodland Skills Centre

Woodlands Skills Centre runs courses in traditional crafts and bushcraft and also family days and holiday club. It is based in 50 acres of woodland in the heart of the AONB near Bodfari. 01745 710626
www.woodlandskillscentre.co.uk

Flintshire Countryside Service
www.flintshire.gov.uk/countryside

Wrexham Countryside Service
www.wrexham.gov.uk/countryside

Conwy Countryside Service
www.conwy.gov.uk/countryside

Llyn Brenig Visitor Centre
www.hiraethog.org.uk

Chirk Castle National Trust
www.nationaltrust.org.uk